

2.13 Pipe Fitting Part 1

1/16"-2" NPT, 1/8"-1/2" BSP/ISO, SAE/MS

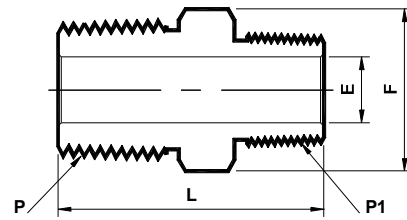
vikay[®]

Valves and fittings

01. Hex Reducing Nipple

Material - **SS 304 | SS 316**

NPT (M) x NPT (M)
(N - PHRN - N)



Sr. No.	NPT ② Male Pipe Size P	NPT ② Male Pipe Size P1	Ref. Part No.		L	ØE ①	Hex F
			SS 304	SS 316			
			PHRN4	PHRN6	Dimensions in Inches		
1	(1/4 x 18) x (1/8 x 27)		4PHRN2Nx4	4PHRN2Nx6	1.22	0.19	9/16
2	(3/8 x 18) x (1/4 x 18)		6PHRN4Nx4	6PHRN4Nx6	1.43	0.28	11/16
3	(1/2 x 14) x (1/4 x 18)		8PHRN4Nx4	8PHRN4Nx6	1.65	0.28	7/8
4	(1/2 x 14) x (3/8 x 18)		8PHRN6Nx4	8PHRN6Nx6	1.65	0.38	7/8
5	(3/4 x 14) x (1/2 x 14)		12PHRN8Nx4	12PHRN8Nx6	1.84	0.47	1.1/16
6	(1 x 11.5) x (1/2 x 14)		16PHRN8Nx4	16PHRN8Nx6	2.13	0.47	1.3/8
7	(1 x 11.5) x (3/4 x 14)		16PHRN12Nx4	16PHRN12Nx6	2.13	0.62	1.3/8

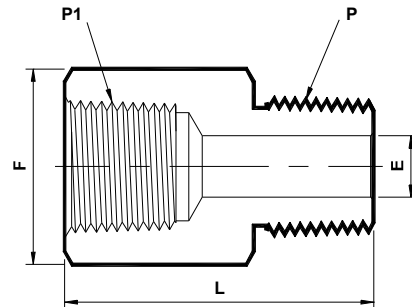
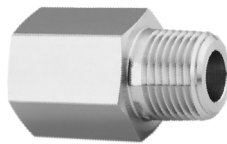
NOTE : ① The 'E' Dimension is the minimum opening.

② NPT thread as per ANSI B 1.20.1.

02. Adapter

Material - **SS 304 | SS 316**

NPT (M) x NPT (F)
(N - PA)



Sr. No.	NPT ② Male Pipe Size P	NPT ② Female Pipe Size P1	Ref. Part No.		L	ØE ①	Hex F
			SS 304	SS 316			
			NPA4	NPA6	Dimensions in Inches		
1	(1/8 x 27) x (1/8 x 27)		2NPAx4	2NPAx6	1.10	0.19	9/16
2	(1/4 x 18) x (1/4 x 18)		4NPAx4	4NPAx6	1.40	0.28	3/4
3	(3/8 x 18) x (3/8 x 18)		6NPAx4	6NPAx6	1.51	0.38	7/8
4	(1/2 x 14) x (1/2 x 14)		8NPAx4	8NPAx6	1.94	0.47	1.1/16
5	(3/4 x 14) x (3/4 x 14)		12NPAx4	12NPAx6	2.02	0.62	1.1/4
6	(1 x 11.5) x (1 x 11.5)		16NPAx4	16NPAx6	2.28	0.88	1.5/8

NOTE : ① The 'E' Dimension is the minimum opening.

② NPT thread as per ANSI B 1.20.1.